



# Virginia Healthcare Workforce Briefs

Indicators from the Bureau of Labor Statistics'  
Current Employment Statistics Survey  
**Series 1: State & National Employment**

Series 1, Issue 79

October 2018

## Inside this Brief:

Virginia HC&SA Employment	2
Virginia Employment	2
National Employment	3
State Employment Growth	3
About the Data	4

Data in the report are seasonally adjusted. Self-employed persons, including health professionals in private practice, are not included.

## Highlights

- ◆ According to preliminary estimates, Virginia's Health Care & Social Assistance (HC&SA) sector enjoyed yet another month of strong employment growth in September. Virginia's HC&SA sector created 1,800 jobs in September, which represents a 5.0% annualized employment growth rate. In addition, Virginia's HC&SA sector has created 5,000 jobs in the past three months.
- ◆ Virginia's total nonfarm payroll increased by 5,600 in September. This gain translates into a 1.7% annualized growth rate. In addition, this gain represents the ninth consecutive month in which Virginia's total nonfarm payroll has increased.
- ◆ Employment growth in the national HC&SA sector slowed down in September after only 29,800 new HC&SA jobs were created across the country during the month. This monthly gain is 30% less than the 42,400 jobs that were created in the national HC&SA sector in August.
- ◆ The nation's total nonfarm payroll also experienced a growth slowdown in September. In September, the nation's total nonfarm payroll increased by 134,000. This gain represents a 1.1% annualized growth rate, which is below the corresponding three-month growth rate of 1.5%.

## Data in Brief

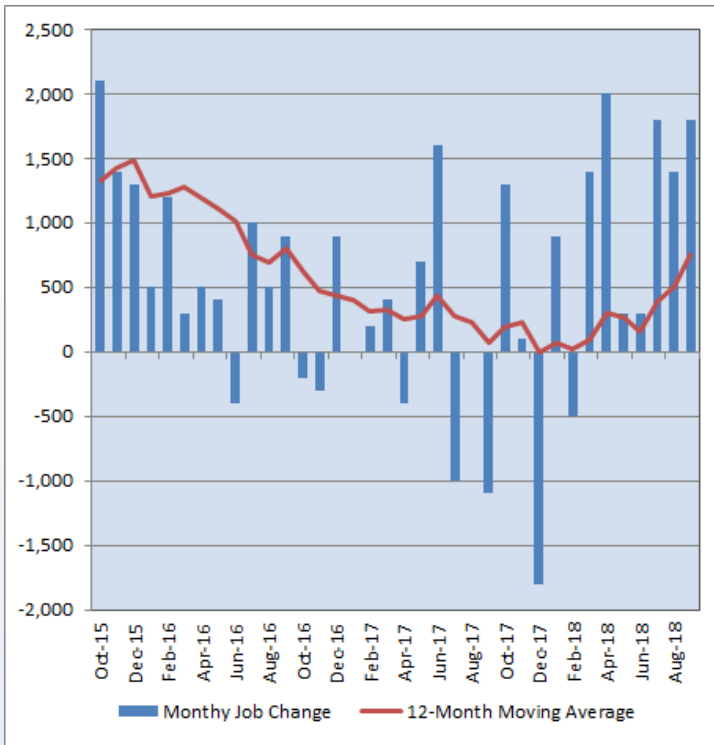
Seasonally Adjusted*	Employment, in Thousands				Growth Rate, Annualized		
	Sept. 2017	June 2018	Aug. 2018	Sept. 2018	12 Month	3 Month	1 Month
<b>Nonfarm, Total</b>							
Virginia	3,956.8	4,005.4	4,019.6	4,025.2	1.7%	2.0%	1.7%
National	146,963.0	148,931.0	149,366.0	149,500.0	1.7%	1.5%	1.1%
<b>Health Care &amp; Social Assistance</b>							
Virginia	434.0	438.0	441.2	443.0	2.1%	4.6%	5.0%
National	19,590.0	19,890.4	19,965.8	19,995.6	2.1%	2.1%	1.8%
<b>All Other Nonfarm</b>							
Virginia	3,522.8	3,567.4	3,578.4	3,582.2	1.7%	1.7%	1.3%
National	127,373.0	129,040.6	129,400.2	129,504.4	1.7%	1.4%	1.0%

Preliminary estimates are italicized

\*Seasonally adjusted data are adjusted by the Bureau of Labor Statistics to account for weather, holidays and other seasonal changes. Economists use seasonally adjusted data to reveal underlying trends over time. This series uses seasonally adjusted data exclusively. When comparing data in this series to other HWDC series, or publications from other sources, it is important to note whether the data reported have been seasonally adjusted.

## Virginia HC&SA Employment

**Figure 1: Monthly Change in Employment in Virginia’s Health Care & Social Assistance Sector, Seasonally Adjusted.**



According to preliminary data released on Friday, October 19, 2018, by the U.S. Department of Labor, Bureau of Labor Statistics, Virginia’s Health Care & Social Assistance (HC&SA) sector added 1,800 new jobs across the state in September, a gain that translates into a 5.0% annualized growth rate. This gain continues a recent string of strong employment growth in Virginia’s HC&SA sector. For instance, over the past three months, employment in Virginia’s HC&SA sector has increased by 5,000. This three-month gain represents a 4.6% annualized growth rate.

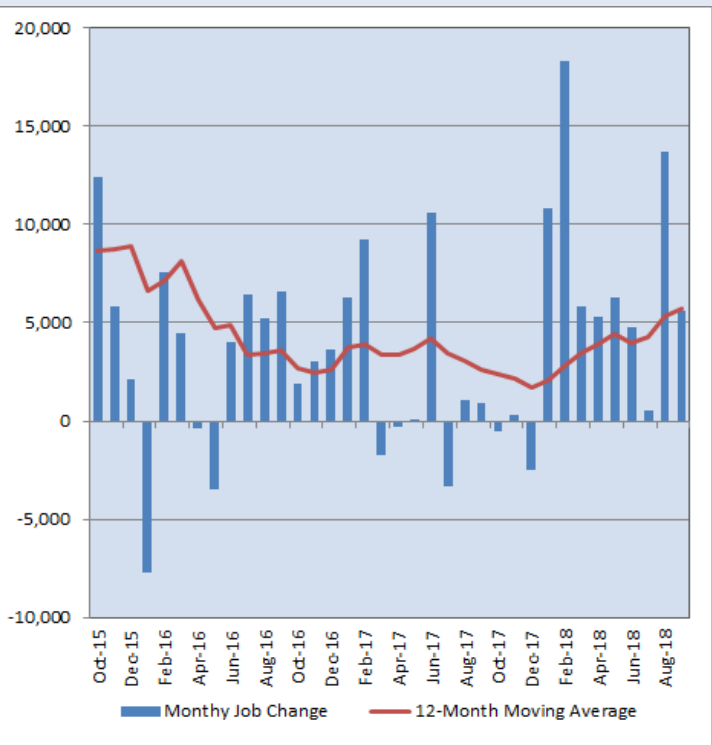
With this gain, Virginia’s HC&SA sector has now increased employment in each of the past seven months. In addition, HC&SA employment increased by more than 1,000 in five of these seven months. Thanks to this strong growth, the 12-month moving average of the employment change in Virginia’s HC&SA sector increased for the third consecutive month in September. Over the past year, employment in Virginia’s HC&SA sector has increased by an average of 750 jobs per month. This represents the highest value for this moving average in two years.

## Virginia Employment

In 2018, Virginia’s total nonfarm payroll has enjoyed consistent employment growth throughout the year, and this trend continued in September thanks to the strong gains in the state’s HC&SA sector. In September, Virginia’s HC&SA sector was responsible for nearly one-third of all statewide employment growth during the month. In particular, the state’s total nonfarm payroll increased by 5,600 in September, a gain that translates into a 1.7% annualized growth rate. Although this gain represents the ninth consecutive month in which the state’s total nonfarm payroll has increased, this result is also well below August’s gain of 13,700. Thus, September’s annualized employment growth rate is below the comparable three-month growth rate of 2.0%.

Despite this slowdown, September’s gain helped to increase yet again the 12-month moving average of the level change in Virginia’s total nonfarm payroll, which reached a two-and-a-half year high during the month. Virginia’s total nonfarm payroll has increased by an average of 5,700 jobs per month over the past year. With this gain, this moving average has nearly tripled since the beginning of the year.

**Figure 2: Monthly Change in Employment in Virginia’s Total Non-farm Payroll, Seasonally Adjusted.**

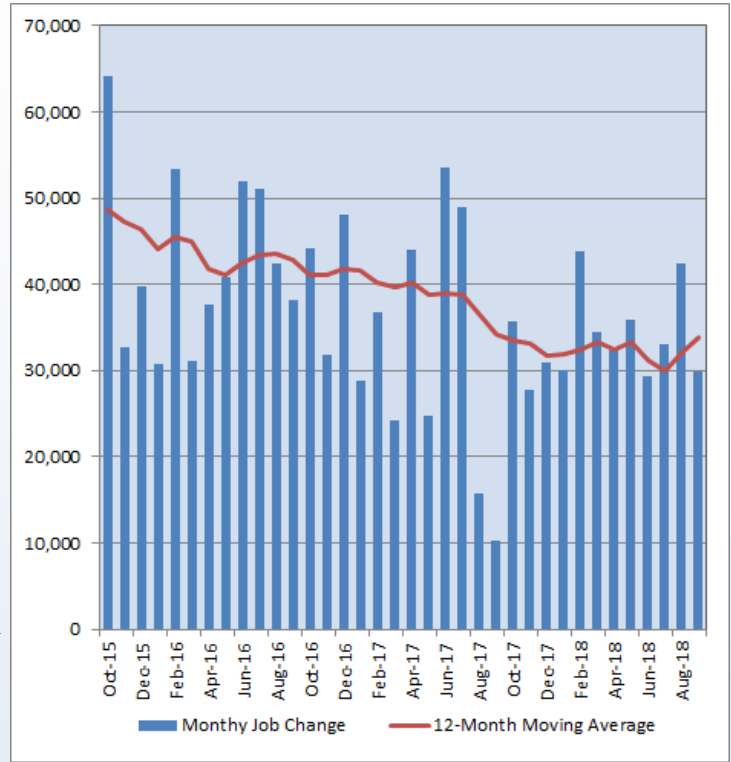


### National Employment

Employment growth in the national HC&SA sector slowed down somewhat in September. This sector created 29,800 new jobs in September, which represents a one-month annualized employment growth rate of 1.8%. This growth rate is below the 2.1% annualized growth rate in national HC&SA employment over the past three months. Regardless, the 12-month moving average of the change in national HC&SA employment increased in September to a one-year high. Over the past year, the national HC&SA sector has created an average of 33,800 jobs per month. This represents a significant improvement relative to July when the 12-month moving average of the change in national HC&SA employment fell to a multiyear low of 29,950.

The nation's total nonfarm payroll also experienced a slowdown in growth during the month. In September, the nation's total nonfarm payroll increased by 134,000, which is less than half of August's gain of 270,000. This gain translates into a one-month annualized growth rate of 1.1%, which is well below its current 12-month growth rate of 1.7%. This also represents the smallest one-month gain in the nation's total nonfarm payroll since last September.

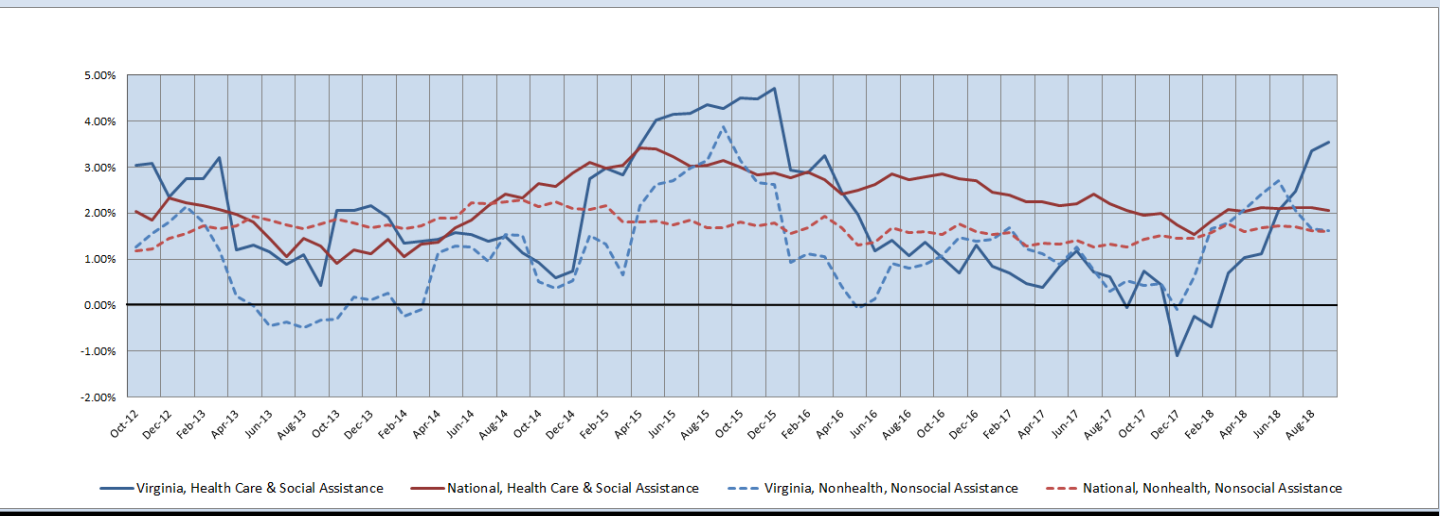
**Figure 3: Monthly Change in Employment in National Health Care & Social Assistance Sector, Seasonally Adjusted**



### State Employment Growth

The six-month moving average of the employment growth rate in Virginia's HC&SA sector increased for the seventh consecutive month in September from 3.36% to 3.54%. At its current level, the six-month moving average of the employment growth rate in Virginia's HC&SA sector is more than double the comparable growth rate in Virginia's total nonfarm payroll. In September, the six-month moving average of the growth rate in Virginia's total nonfarm payroll fell slightly from 1.66% to an eight-month low of 1.63%. The national HC&SA sector also experienced a small decline in its six-month employment growth rate moving average from 2.11% to 2.06%. A similar trend can also be observed in the nation's total nonfarm payroll, which saw its six-month growth rate moving average fall from 1.62% to a seven-month low of 1.59% in September.

**Figure 4: Six-Month Moving Average, Employment Growth, Seasonally Adjusted**



**Healthcare Workforce  
Data Center**

Perimeter Center  
9960 Mayland Drive, Suite 300  
Henrico, VA 23233-1463

Phone: (804) 367-2115  
Fax: (804) 527-4434  
E-mail: [hwdc@dhp.virginia.gov](mailto:hwdc@dhp.virginia.gov)

[www.dhp.virginia.gov/hwdc/](http://www.dhp.virginia.gov/hwdc/)

*HWDC Staff:*

Elizabeth Carter, PhD <i>Executive Director</i>	Yetty Shobo, PhD <i>Deputy Director</i>
Laura Jackson <i>Operations Manager</i>	Christopher Coyle <i>Research Assistant</i>

Follow us on . . .

Tumblr: <http://vahwdc.tumblr.com/>

The Department of Health Professions Healthcare Workforce Data Center works to improve the data collection and measurement of Virginia's healthcare workforce through regular assessment of workforce supply and demand issues among the 80 professions and 350,000 practitioners licensed in Virginia by DHP.

The HWDC collects data on Virginia's licensed health professionals through surveys completed during the online license renewal and application process. Survey results and data may be accessed on our website: [www.dhp.virginia.gov/hwdc/](http://www.dhp.virginia.gov/hwdc/).

The HWDC also provides a series of Virginia Healthcare Workforce Briefs based on data collected by the US Department of Labor's Bureau of Labor Statistics and the US Department of Commerce' Bureau of Economic Analysis.

Virginia Healthcare Workforce Briefs:

Series 1: State & National Employment (Monthly)

Series 2: Virginia Regional Employment (Monthly)

Series 3: Income & Compensation (Quarterly)

---

**About the Data**

Data in this report are from the US Department of Labor, Bureau of Labor Statistics' Current Employment Statistics program. The CES program surveys about 143,000 businesses and government agencies monthly. Unless otherwise noted, this series uses seasonally-adjusted data that removes seasonal variations related to weather, holidays, weekends, seasons and other predictable variations. This allows us to better examine underlying trends in the labor market. Data from recent months are preliminary and subject to revision in future releases from the CES. Revisions will be reported in future editions of this series. Unless otherwise noted, the CES data presented in this series:

**Includes:**

- ◆ Data on employed individuals drawing a paycheck (payroll employees).
- ◆ All employees, regardless of role, occupation or hours worked.
- ◆ HC&SA employees in the private sector only.
- ◆ Persons employed by health professionals in private practice.
- ◆ Both government and private sector workers in nonfarm employment data.

**Does not include:**

- ◆ Self-employed workers or volunteers, including health professionals in private practice.
  - ◆ HC&SA employees in the public sector. (These are counted as government workers in monthly reports).
  - ◆ Information on hours worked or the quality of employment.
  - ◆ Government workers in HC&SA level data. (Government workers, regardless of occupation and role, are classified as public sector employees).
-